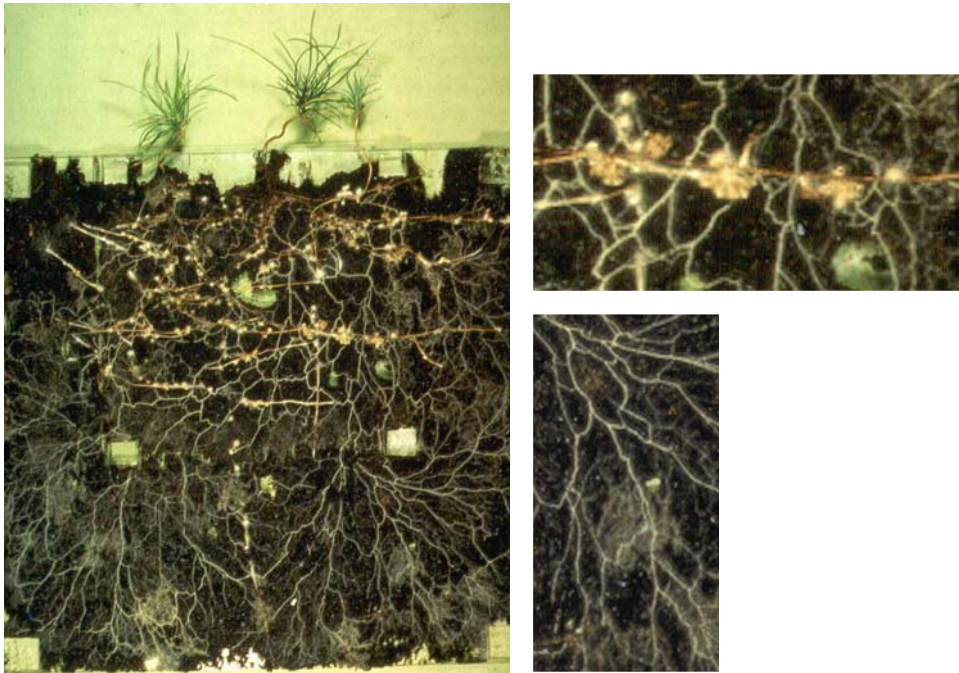
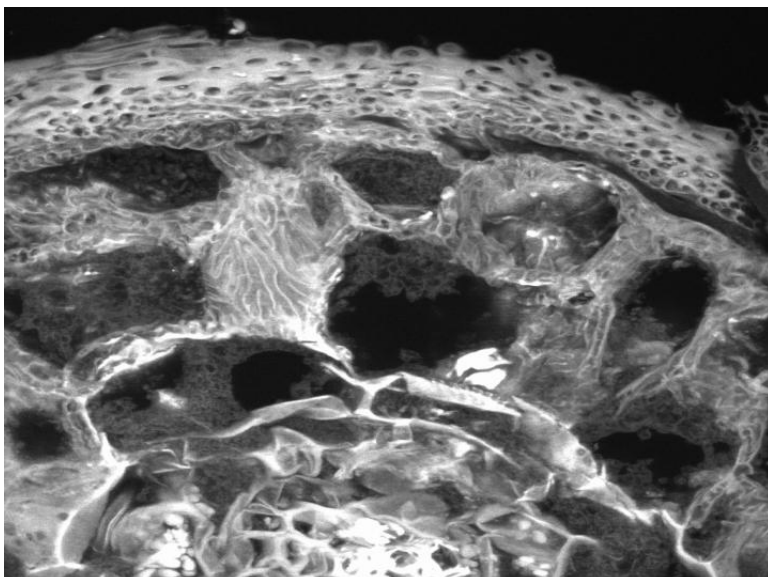


Research interests

I work with mycorrhizal symbioses. The ecological importance of the mycorrhizal symbioses between plants and fungi is still not fully appreciated and many functional aspects of this interaction are not understood. My main interests are in the ecophysiological aspects of this symbiosis. I am particularly interested in the ectomycorrhizal symbiosis, the interaction between mainly basidiomycetes and trees.

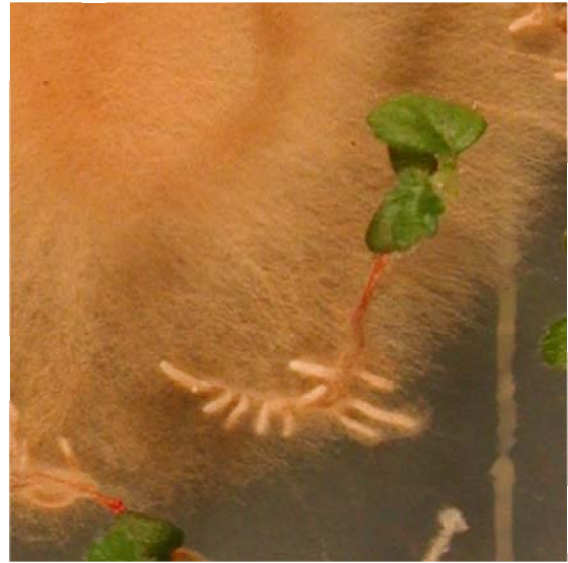


I have a special interest in the ecology and physiology of the fungal partner. The photos above illustrate a very versatile lab growth system that allows experiments and manipulations of the fungal partner directly with its mycelium colonizing the soil in the symbiotic situation. On top in the microcosms are two small pine plants and their roots can be seen colonizing the peat, the solid substrate in the system. In the enlarged photos the ectomycorrhizal root tips are evident as well as the white fungal mycelium (a *Suillus* species) colonizing the substrate.



I am not only interested in the behaviour of the fungus in the soil, but the interface between the fungus and the root cells is also an area where much of the action is. In this micrograph the fungus can be seen colonizing the surface of the root forming a sheath and also the intracellular space in between the root cells.

My pet fungus is *Paxillus involutus*



Which here can be seen colonizing a small birch seedling in a Petri dish. The colonized root tips are covered by the fungal mycelium.

If you are interested in more details, please contact me.